

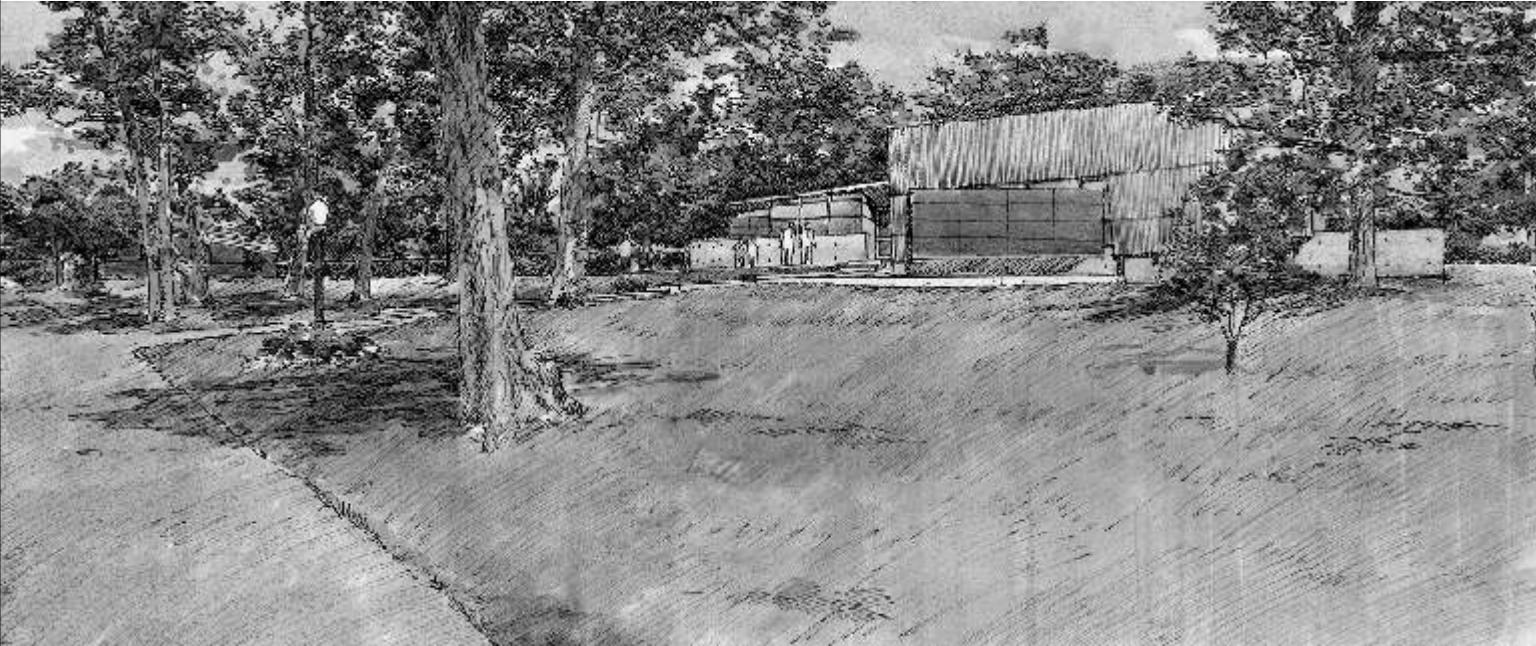
HAND
INTELLIGENCE



ACADEMY MONTESSORI INTERNATIONALE MULTIPURPOSE BUILDING
kansas city missouri
2002

Intended as a truly multi-purpose room for a Montessorri elementary school this project began as series of studies of site locations. The existing school and the house, the adjoining play grounds/yards, the flow of traffic and the topography of the ten acre site all acted together as a cohesive generator of both the basic location as well the geometry of the proposed project. As an independent entity, the proposed building continues and extends the farm-like pattern of the two other structures on the site: the school and the owner's house.

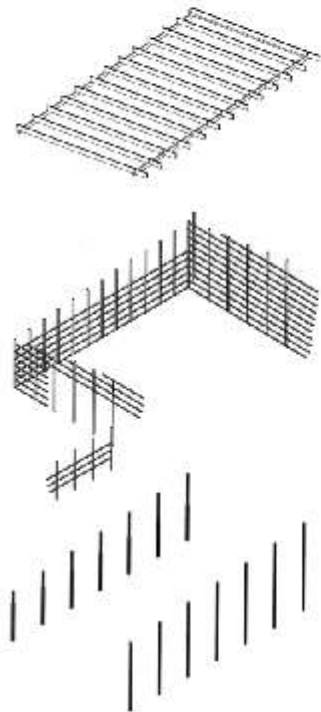
In the spirit and educational philosophy of Maria Montessorri, who drew no harsh lines in the activity of the child, the new space will overlap and merge the activities of play and work. As against the introverted rejecting box that characterizes most school gymnasiums, it was determined that this space would be spatially and formally *extended* into the landscape upon which it is placed. The articulate expression of how the structure is made, both at the macro level and at the level of details (furniture, things), is particularly important in the child's education.



A low concrete wall, a mark in the ground that extends the geometry of the existing school, and acts as the fundamental act of containment as it "dams" the rapid down ward flow of the topography. From this, the most sensorial element, the space arises in a series of space enclosing acts that analogically respond to Montessorri's interpretation of a child's development: from sensorial to the specialized and abstract. Support activities such as stage, storage, kitchen, toilets etc. are contained in plywood clad boxes and constitute the "middle scale" in terms of tectonics and the haptic sense. A folded and lifted metal wall/roof resting on a skeletal structure completes the space.

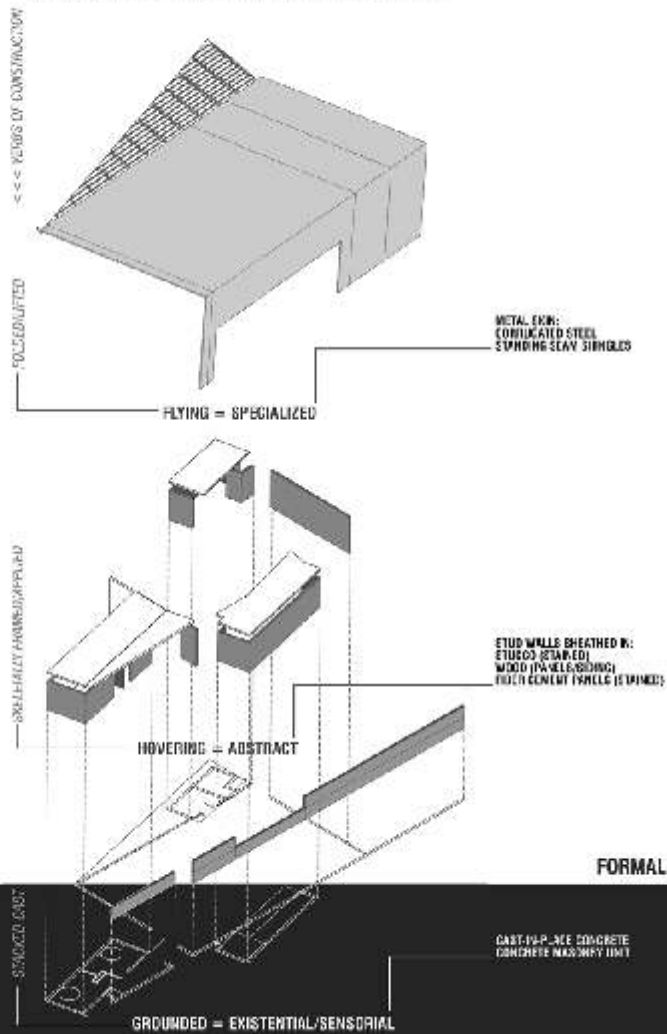
Expected to act as a versatile box that will house multiple activities (art, nature education/ social gatherings/ performances/ sports) the space is pulled to interact with the outdoors through garage doors and a substantial mount of polycarbonate glazing. Operable openings along with a large fan system will help ventilate the space in the summer and thereby negate the use of an air-conditioning system. The immediate exterior landscape will include a vegetable garden that the children will nurture. The rainwater run off will be channeled on the south and east side for this use. Insulated sandwich panels on the roof and walls will lessen the thermal demand on the mechanical system. Solar panels on the south facing main roof are under study.

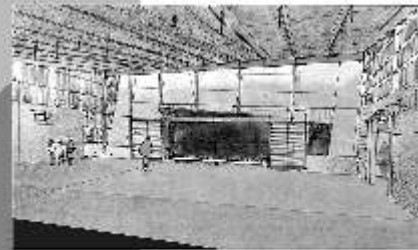
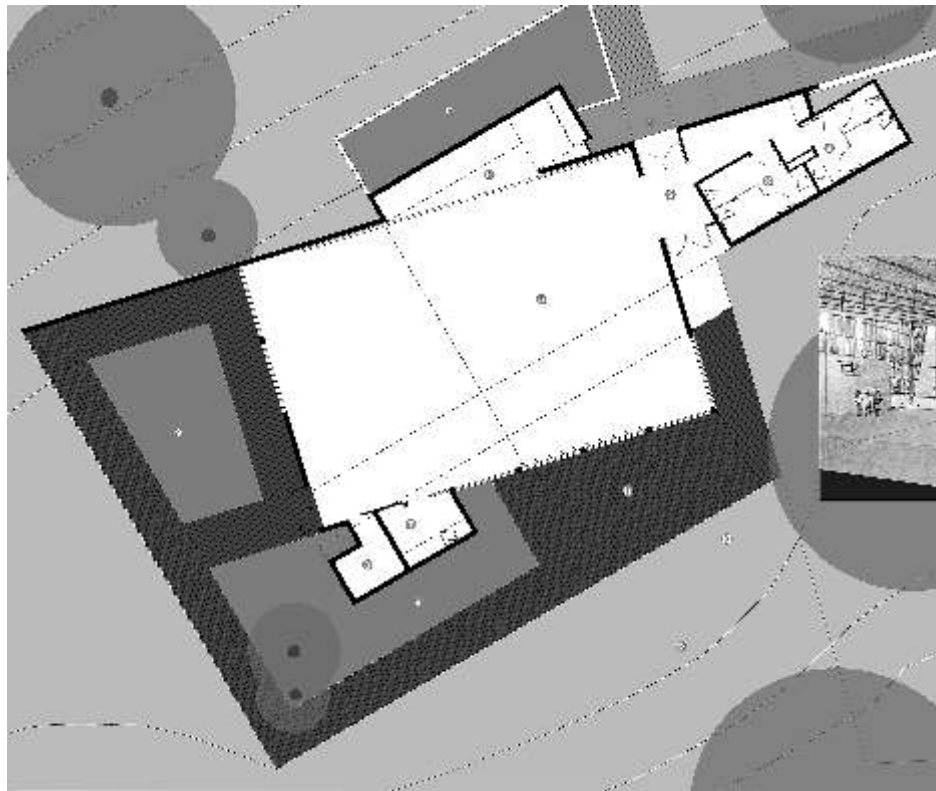
STRUCTURE



ENCLOSURE

3 LEVELS OF GRAVITY – 3 LEVELS OF EXPERIENCE





- 1. HALL
- 2. OFFICE
- 3. OFFICE
- 4. OFFICE
- 5. OFFICE
- 6. OFFICE
- 7. OFFICE
- 8. OFFICE
- 9. OFFICE
- 10. OFFICE
- 11. OFFICE
- 12. OFFICE
- 13. OFFICE
- 14. OFFICE
- 15. OFFICE
- 16. WORKSHOP

